

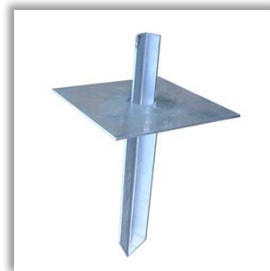
15' Mobile Pop-Up

- 5' sections
- Guy Rings not included

Product Features

- High strength galvanized steel tubing
- Precision flared and swaged for smooth fit
- 16 gauge top section, balance 18 gauge
- Guy rings included with 20, 30, 40 & 50 foot models
- Snap lock for easy installation
- Chafe resistant, floating guy rings
- Various bases available

** Telescoped length of each model 20A-50A. 10' mast section is 9'6" when locked.*



BP-125

Pop-Up Base Plate



2178

Saddle roof mount for 20A & 30A



2180

Angle base for 1 1/4" mast



2175

Swivel base plate for 20A and 30A

2225

Swivel base plate for 40A and 50A



GR-125

1 1/4" (3.2cm) guy rings with rounded edges

GR-150

1 1/2" (3.8cm) guy rings with rounded edges

Rotating guy rings allow for guying in universal directions with 6 holes



GUY WIRE

750' of 6 strand 20 Gauge

Wade Antenna's ongoing policy of continuing development may result in specification changes to its products